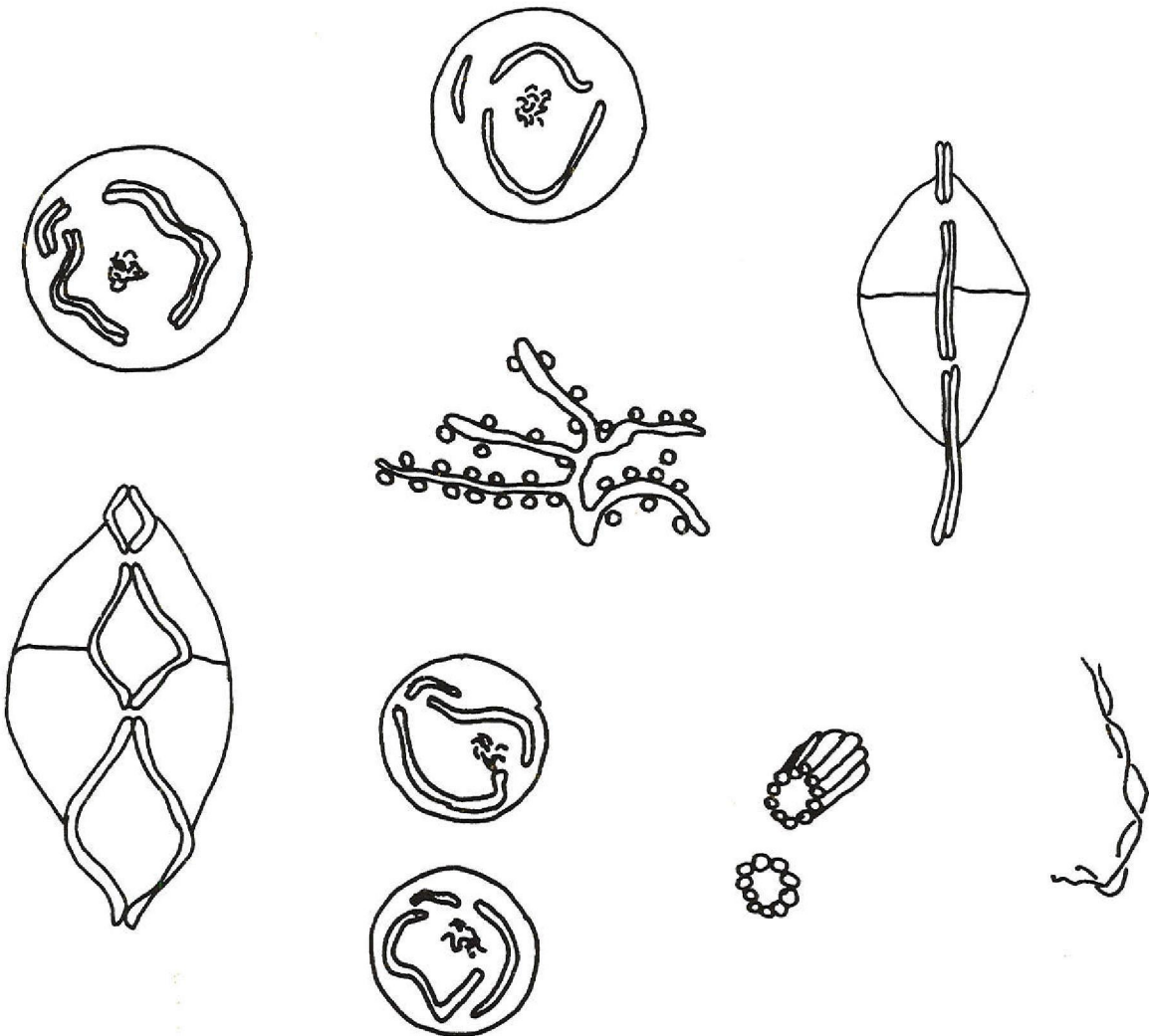


A Collection of Curricula for the STARLAB Biological Cell Cylinder



Including:

Examining the Super Cell Learning Technologies

The Cell Game..... Gary D. Kratzer

Examining the Super Cell

from Learning Technologies

A Concise Guide to Its Use

The diagrams that follow are meant to aid users of the STARLAB Biological Cell Cylinder in understanding the layout of the cylinder. The three main sections of the Biological Cell Cylinder are:

1. The Nucleus: top of the cylinder
2. Cell Division: lower half of the main body of the cylinder
3. Protein Synthesis Process: upper half of the main body of the cylinder

Note

Following are simple diagrams and explanations of the above cell components and their processes.

Description of the Biological Cell Cylinder

Nucleus (at the top of the cylinder)

Nucleolus

A mass of fine threads and particles, largely a sequence of identical units of specialized genetic material.



Chromosomes

Individual units of genetic material containing information that is passed from parent cell to daughter cell during multiplication of cells.



Chromatin

Masses of unorganized chromosomes which separate during the cell division process.

